



AllAccem

CutoGuard™

Companion Animal
Veterinary Derm Bandage



- *Forms a long-lasting protective layer over lesions, sores, hot spots and wounds*
- *It keeps the affected area clean and free of contamination during the healing process*
- *Discourages licking, chewing or biting at the affected site due to bitterant*
- *A single professional application, frees your clients from daily home care*
- *Easy to apply liquid formulation, dries clear and rapidly*
- *Convenient, durable and flexible for patient comfort*



Clinical Information

Pyoderma is a bacterial infection of the skin. Most skin infections are secondary to a variety of other conditions; allergies, endocrine disease, seborrheic conditions and parasitic diseases are the most common. Clinical signs associated with pyoderma are papules or pustules, scaling and itching. Bacterial skin infection occurs when the epidermal barrier is defective or the immune system has been suppressed. Treatment of superficial pyoderma involves administration of appropriate antibiotics, topical care, and addressing underlying factors. The goal of topical care is to keep the area clean and hydrated for faster resolution. Owner compliance is important as shampoo therapy every other day is often prescribed. Bathing is very time consuming and appropriate contact time and thorough rinsing with warm water are key steps. This can be a challenging task. Veterinarians can provide a convenient solution by applying CutoGuard™, a long-lasting liquid bandage that was specifically developed to keep the affected area clean and free of contamination. Upon application, the liquid bandage dries rapidly and forms a protective cover that is flexible and durable. CutoGuard™ is convenient, effective and naturally wears off as the skin heals.

Application



Figure 1

Figure 1 shows affected area before clipping, shaving and cleaning



Figure 2 shows affected area after clipping, shaving, cleaning and drying.



Figure 2

It is important to clean the surface prior to product application. After cleaning, ensure that all soap and/or antiseptic has been removed by thoroughly rinsing with water. Area must be debris, salt and soap free for good product/skin contact adhesion and optimal product performance.

Figure 3 shows affected area immediately after CutoGuard™ application.

For best results, dip brush in the vial before each brush stroke. Paint the product about 3 to 5 mm past the outer edge of the area to be covered. A thick coating is required to be effective. CutoGuard™ can only be effective on the surface it contacts, it is not designed to drift. Try not to disturb the area or remove the product during follow-up visits. It naturally wears off as the skin heals.

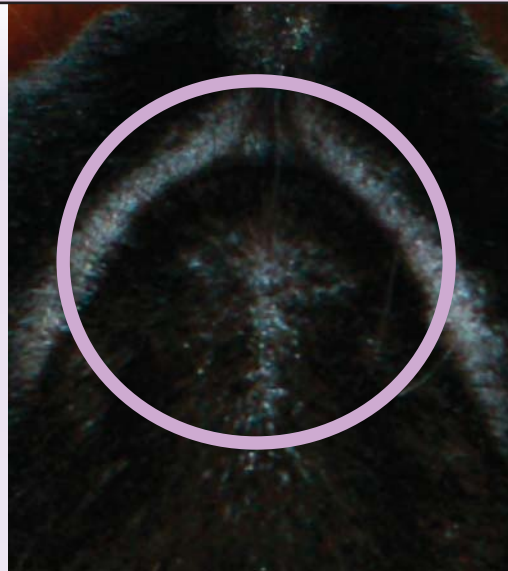


Figure 3

Case Study: Feline Chin



Before CutoGuard™



6 Months After CutoGuard™

Case Study: Canine Abdomen



Before CutoGuard™



16 Days After CutoGuard™

Case Study: Canine Interdigital Foot



Before CutoGuard™



21 Days After CutoGuard™

Why CutoGuard™ ?

- A solution to the compliance problem with home care bathing and shampoo therapy
- Ideal for breeds who are prone to pyoderma
- Liquid bandage, made from specially designed non-toxic polymers
- Easy-to-apply in the clinic
- Dries quickly and is designed to last for up to several weeks
- Convenient, effective and simple to use



Product Information

- (1) derm workstation
- (2) applicator brushes
- (1) 1/16 oz. product vial & cap

Warning: Not For Human Use
For Animal Use Only
For Use In Dogs and Cats
Topical Use Only

Store at room temperature
Keep away from heat & sunlight

For more information :
Email: cutoguard@allacem.com
Phone: 888-617-2667
Website: www.allacem.com

CutoGuard™ is manufactured by AllAccem, Inc.


AllAccem
Copyright 2013 © AllAccem, Inc.